

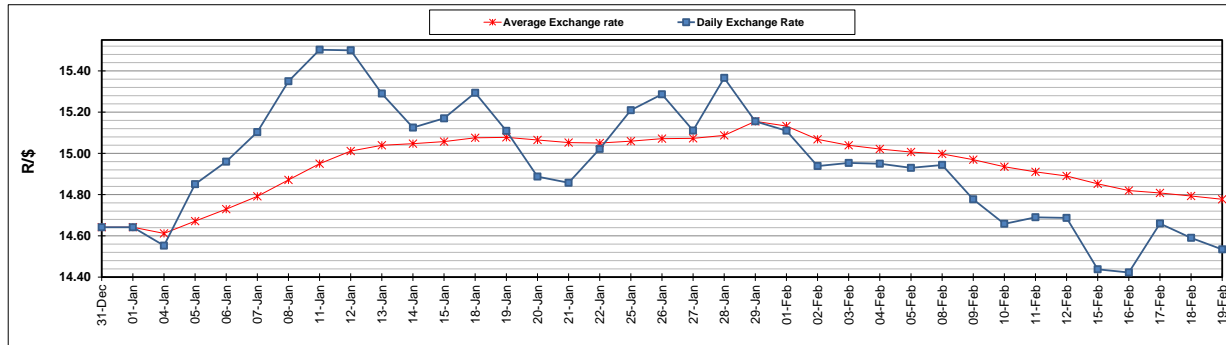
	PETROL 95 ULP	PETROL 93 ULP & LRP	DIESEL 0.05%	DIESEL 0.005%	ILL. PAR.
GAUTENG PUMP PRICE (SA c/l) AS FROM 03/02/2021	1,567.000	1,550.000	-	-	-
WHOLESALE PRICE (SA c/l) AS FROM 03/02/2021	-	-	1,358.420	1,360.820	798.688
SINGLE NATIONAL MAXIMUM RETAIL PRICE	-	-	-	-	1,008.000
BASIC FUEL PRICE - 19/02/2021 (SA c/l)	667.303	655.862	654.831	658.289	629.917
PRESS RELEASE CONTRIBUTION TO BFP 03/02/2021 - 19/02/2021 (SA c/l)	600.170	593.170	599.630	602.030	586.128
UNIT OVER/(UNDER) RECOVERY - 19/02/2021 (SA c/l)	(67.133)	(62.692)	(55.201)	(56.259)	(43.789)
AVERAGE BASIC FUEL PRICE 29/01/2021 - 19/02/2021	642.933	634.113	637.184	640.848	617.430
AVERAGE UNIT OVER/(UNDER) RECOVERY 29/01/2021 - 19/02/2021	(57.950)	(56.130)	(48.429)	(49.881)	(42.364)

ANALYSIS MOVEMENT OF AVERAGE OVER/(UNDER) RECOVERY

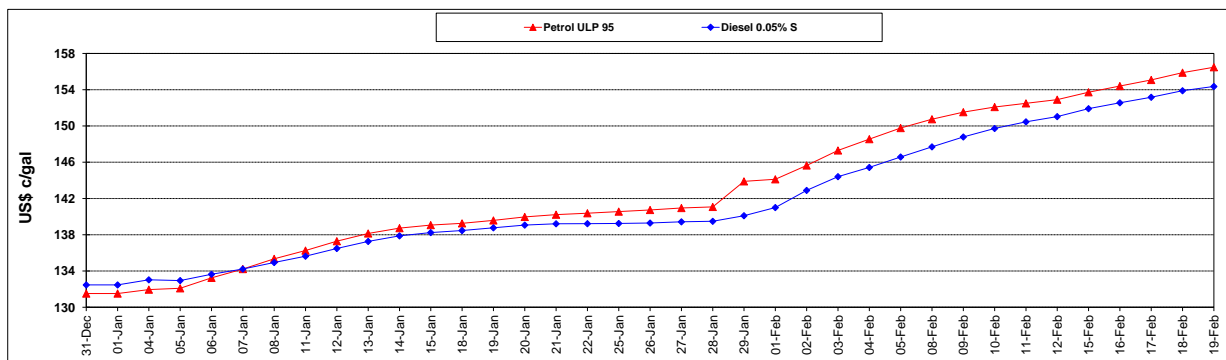
	PETROL 95	PETROL 93	DIESEL 0.05%	DIESEL 0.005%	ILL. PAR.
- MOVEMENT IN INTERNATIONAL PRODUCT PRICES	(71.429)	(69.424)	(61.787)	(63.315)	(55.308)
- MOVEMENT IN EXCHANGE RATE	13.479	13.294	13.358	13.435	12.944
AVERAGE UNIT OVER/(UNDER) RECOVERY 29/01/2021 - 19/02/2021	(57.950)	(56.130)	(48.429)	(49.881)	(42.364)

R/\$ EXCHANGE RATE - (R/\$14.5345 - 19/02/2021)

EXCHANGE RATE USED IN BASIC FUEL PRICE



INTERNATIONAL PRODUCT PRICES OF BASKET USED IN BASIC FUEL PRICE



BASIC FUEL PRICE IN SA CENTS PER LITRE

